

Connected Process Control Track and Trace

EPICOR

Manufacturers from all industries are realizing the importance of traceability

Manufacturing traceability is becoming a critical requirement for industries globally to reduce risks, meet regulatory requirements, and stay competitive. Not only is it essential in highly regulated industries such as medical, automotive, aerospace and defense, and food and beverage, it is has become increasingly important for all manufacturers, across all industries to better manage product and process quality and respond to customer demands.

Problems manufacturers currently face when it comes to traceability

In order to implement a traceability solution, parts or lots need to be marked. Options manufacturers can choose from include the use of serial numbers, 1D or 2D barcodes or RFID tags.

Marks can be through ink, label, chemical etch, laser, dot peen, etc. Appropriate markings will then allow for easy barcode or camera readings at the station level for tracking and data collection.

Current traceability solutions falling short

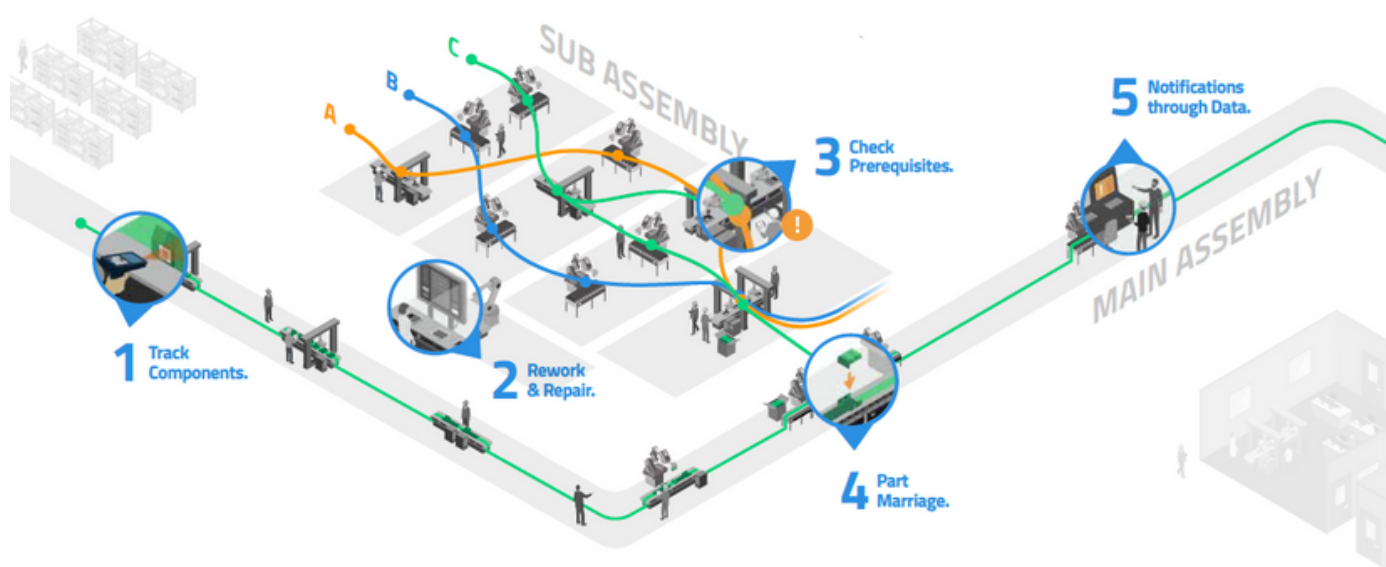
Systems that are not well integrated with plant floor controllers and networks can cause issues such as response delays and inflexible architectures.



The Epicor Advantage

With over 30 years of experience and expertise, Epicor is the global leader in discrete manufacturing traceability. Our flexible solutions drastically reduce or eliminate the reliance on PLCs with sub-second response times and “full” fail-over capabilities.

Whether you need a basic solution with the ability to scan batch/lot numbers and sub-assembly numbers for some traceability or an advanced solution with complete traceability, pre-requisites, queries, contain-ment campaigns, part marriage and more – eFlex has you covered. Get the level of traceability you need and only pay for what you need!



1. Various Tracking Methods

Track components and products utilizing serial number barcode scans, RFID tags, or through PLC tasks - in any combination or order!

2. Rework/Repair Strategies

Track components and products utilizing serial number barcode scans, RFID tags, or through PLC tasks - in any combination or order!

3. Flexible Path Configurations

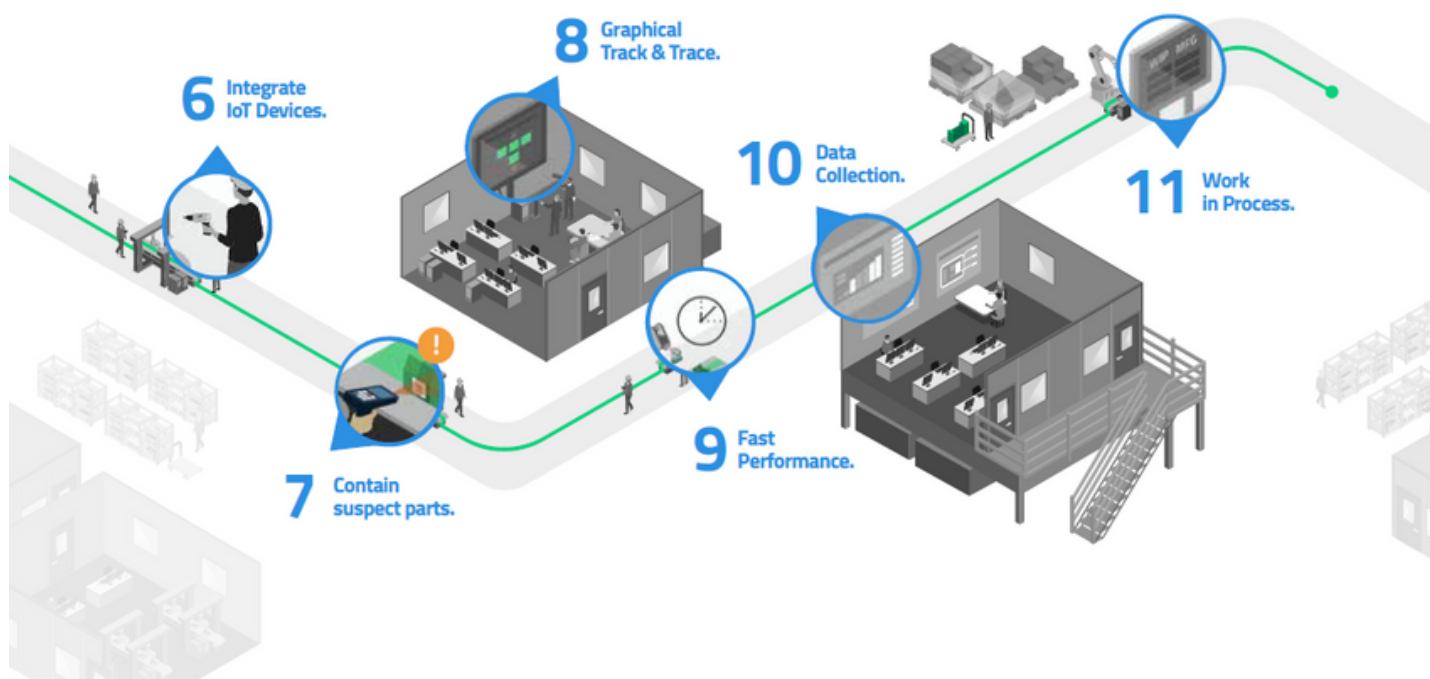
Easily configure production processes and path configurations – ensuring all build prerequisites are checked at each station.

4. Part Marriage and Divorce

Parts can be married or divorced at any station as each is performed asynchronously. Verify supplier's married components are not contained.

5. Data-driven Notifications

If a process data point is out of spec, receive alerts that include WIP targets, quality issues, manufacturing cycle times, and many more.



6. Easily Integrate IoT Devices

To further eliminate errors, easily connect, enable and control IoT devices in your assembly process. Plug-n-play with no programming.

7. Easily Contain Suspect Parts

Quickly identify bad parts, contain them, and stop production on those parts - make certain First Time Quality (FTQ) scores remain exceptional.

8. Graphical Track and Trace

Innovative, user-friendly interface which enable a visual view of plant floor parts, statuses, serial numbers and quantities.

9. Fast Performance and Reliability

Extremely fast, sub-second response times. Simultaneously enables real-time responses to hundreds of connected stations.

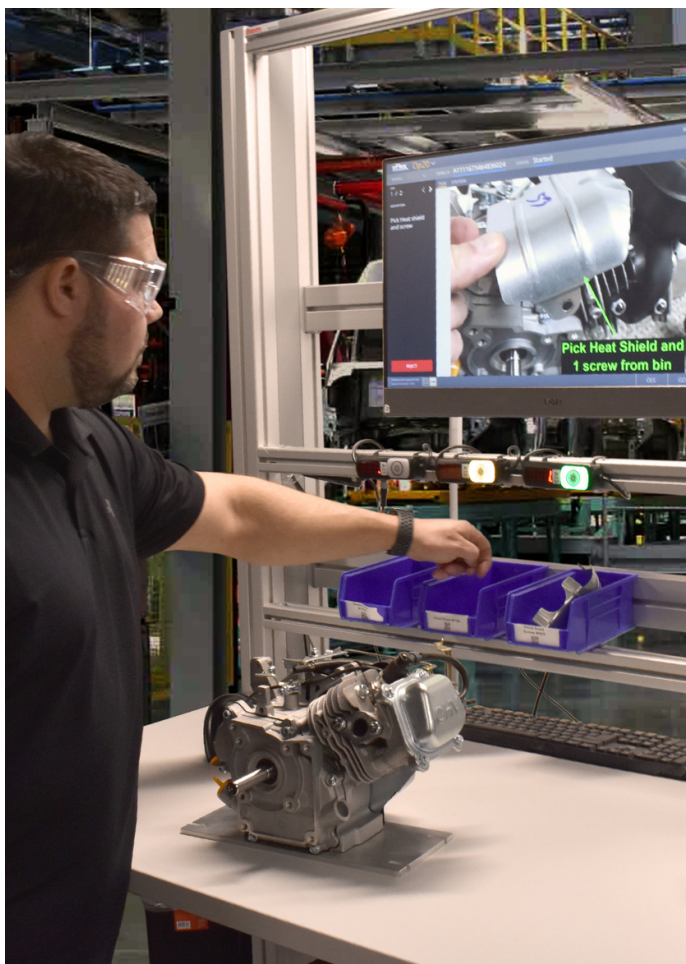
10. Process Data Collection

From operator to keyboard wedge, capture manual process data from operators. Unlimited data collection options and capabilities.

11. Work in Process

Understand model variations. Total number of parts, parts in the process, and how long parts are taking to go through their process.

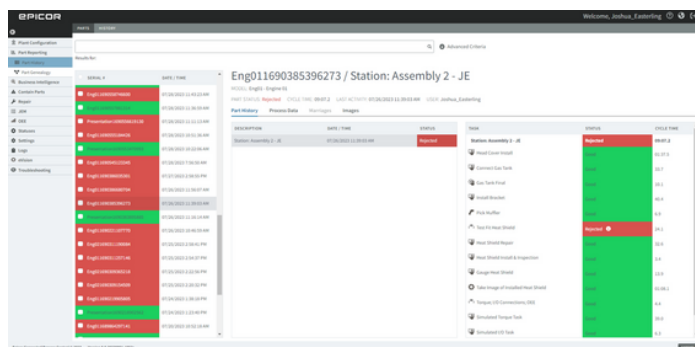




Get the Insight You Need

Digital traceability captures detailed and granular statistical process data. eFlex Track & Trace enables numerous web-based reporting capabilities for queries and reporting on part status, station, date/time, cycle times, images, process data, containment, rework/repair, diagnostics/events, production history and more.

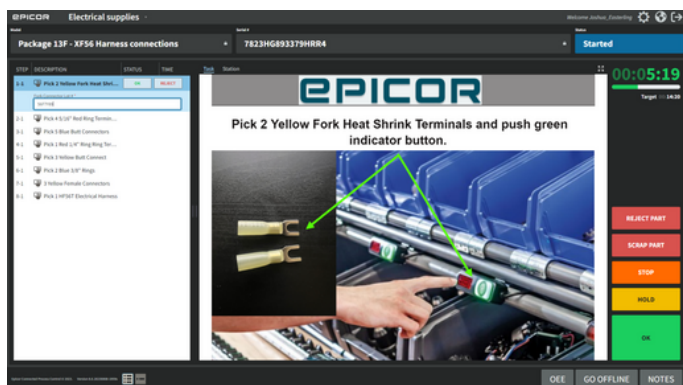
Get a digital birth certificate for every product built down to the component and task level. Get the proof you need that products were built correctly, with date, time, manufacture location, components/materials used, operator tracking, as well as complete in-process data and end-of-line test results.



Add the Power of Production Images to Your Track and Trace

Gather powerful process data as well as 2D images for quality spills, warranty claims and improved root cause analysis. Our web-based interface allows users on any device to quickly and easily search, download and analyze images cost-effectively and in real-time as products are being built.

Contain quality spills by simply finding the “start” and “end” of the spill. Comply with FDA21 CFR Part 11 audit trails to help protect against warranty claims.



Benefits of Track and Trace

Improved Quality

Easily and seamlessly identify, contain, and manage defective parts.

Reduced Production Costs

Gain new levels of efficiency and maximize quality in your operations.

Compliance and FDA Requirements

Digital part records to comply with industry regulations.

OEM and Customer Requirements

Digital proof that all products were made to specifications.

Plant Floor Visibility

Real-time plant floor connectivity, control and monitoring.

Warranty and Recall Protection

1D & 2D data to support or alleviate safety and litigation claims.

Brand Consistency

Maintain high quality products to ensure customer safety and satisfaction.

Simple, Easy, and Turnkey

Save in-house resources and get immediate ROI and traceability.

Recorded Part History for *any* Part



Get a digital birth certificate for every product built down to the component and task level



Quickly and easily analyze and manage quality spills, recalls, warranty claims and compliance issues



Share key data and digital build history reports with key customers to meet FDA and quality audits

Get Started Today

Whether you're looking for a basic or advanced traceability solution....

Epicor has a solution for you

A flexible traceability solution to easily enable, enforce, and track the quality process .

Request a Demo

To learn more about Connected Process Control Track & Trace or integration with any of our other platform solutions, visit www.eflexsystems.com, or call 883.463.3539 and request a free demo today!



EPICOR

We're here for the hard-working businesses that keep the world turning. You're the companies that make, move, and sell the things we all need. Trust Epicor to help you do business better. Your industry is our industry, and we understand you better than anyone. By working hand-in-hand, we get to know your business almost as well as you do. Our innovative industry solution sets are carefully built to fit your needs and respond flexibly to your fast-changing reality. We accelerate ambitions, whether you want to grow and transform, or simply become more productive and effective. That's what makes us the essential partner to the world's most essential businesses.

Contact Us Today: info@epicor.com | www.epicor.com

This document is informational only. Epicor Software Corporation makes no guarantees, representations, or warranties to the information and disclaims, any implied warranties, such as fitness for a particular purpose, merchantability, satisfactory quality, or reasonable skill and care. Testimonials are unique to the particular user and may vary. Epicor and the Epicor logo are trademarks of Epicor Software Corporation. Other trademarks are the property of their respective owners. Copyright © 2023 Epicor Software Corporation. All rights reserved. Rev. Date September, 2023.